

学位論文

**Transplant Prognosis in Kidney Transplant Recipients with
Diabetes under Mycophenolic Acid-Focused Therapeutic
Drug Monitoring**

香川大学大学院医学系研究科

医学専攻

中村 英祐



Article

Transplant Prognosis in Kidney Transplant Recipients with Diabetes under Mycophenolic Acid-Focused Therapeutic Drug Monitoring

Eisuke Nakamura ¹, Tadashi Sofue ^{1,*}, Yasushi Kunisho ¹, Keisuke Onishi ¹, Kazunori Yamaguchi ², Emi Ibuki ³, Rikiya Taoka ⁴, Nobufumi Ueda ⁴, Mikio Sugimoto ⁴ and Tetsuo Minamino ¹

- ¹ Division of Nephrology and Dialysis, Department of Cardiorenal and Cerebrovascular Medicine, Faculty of Medicine, Kagawa University, Takamatsu 761-0793, Kagawa, Japan; nakamura.eisuke@kagawa-u.ac.jp (E.N.); kunisho.yasushi@kagawa-u.ac.jp (Y.K.); onishi.keisuke@kagawa-u.ac.jp (K.O.); minamino.tetsuo.gk@kagawa-u.ac.jp (T.M.)
 - ² Department of Pharmacy, Kagawa University Hospital, Takamatsu 761-0793, Kagawa, Japan; yamaguchi.kazunori@kagawa-u.ac.jp
 - ³ Department of Pathology, Faculty of Medicine, Kagawa University, Takamatsu 761-0793, Kagawa, Japan; ibuki.emi@kagawa-u.ac.jp
 - ⁴ Department of Urology, Faculty of Medicine, Kagawa University, Takamatsu 761-0793, Kagawa, Japan; taoka.rikiya@kagawa-u.ac.jp (R.T.); ueda.nobufumi@kagawa-u.ac.jp (N.U.); sugimoto.mikio@kagawa-u.ac.jp (M.S.)
- * Correspondence: sofue.tadashi@kagawa-u.ac.jp; Tel.: +81-(87)-891-2150 (ext. 2623); Fax: +81-(87)-891-2152



Citation: Nakamura, E.; Sofue, T.; Kunisho, Y.; Onishi, K.; Yamaguchi, K.; Ibuki, E.; Taoka, R.; Ueda, N.; Sugimoto, M.; Minamino, T. Transplant Prognosis in Kidney Transplant Recipients with Diabetes under Mycophenolic Acid-Focused Therapeutic Drug Monitoring. *J. Pers. Med.* **2021**, *11*, 1224. <https://doi.org/10.3390/jpm11111224>

Academic Editors: Haruhito A. Uchida and Stefano Loporatti

Received: 22 September 2021
Accepted: 16 November 2021
Published: 18 November 2021

Publisher's Note: MDPI stays neutral with regard to jurisdictional claims in published maps and institutional affiliations.



Copyright: © 2021 by the authors. Licensee MDPI, Basel, Switzerland. This article is an open access article distributed under the terms and conditions of the Creative Commons Attribution (CC BY) license (<https://creativecommons.org/licenses/by/4.0/>).

Abstract: Mycophenolate mofetil is a key immunosuppressant that is metabolized into mycophenolic acid (MPA). The prognostic impact of MPA-focused therapeutic drug monitoring on allograft prognosis has not been determined in kidney transplant recipients with diabetes. In this study, we assessed the pharmacokinetics of MPA and allograft prognosis in recipients with diabetes. This study retrospectively analyzed 64 adult kidney transplant recipients. MPA blood concentration data (e.g., the time to the maximum concentration (T_{max}), and the area under the concentration–time curve from 0 to 12 h (AUC_{0–12})) were collected at 3 weeks and 3 months after kidney transplantation. Of the 64 recipients, 15 had pre-existing diabetes. At 3 months after kidney transplantation, the T_{max} of MPA was significantly longer in recipients with diabetes (mean (standard deviation): 2.8 (2.1) h) than in recipients without diabetes (1.9 (1.1) h, *p* = 0.02). However, the allograft estimated glomerular filtration rate and acute rejection rate, including borderline change, did not differ according to the diabetes status in patients with adjusted AUC_{0–12} of MPA within the target range. In conclusion, a longer T_{max} of MPA was observed in recipients with diabetes; however, acceptable allograft prognosis was observed in kidney transplant recipients with diabetes and a sufficient AUC_{0–12} of MPA.

Keywords: kidney transplantation; diabetes; mycophenolic acid; therapeutic drug monitoring

1. Introduction

Diabetic nephropathy is a major complication of type 2 diabetes mellitus and a leading cause of end-stage renal disease [1,2]. Patient and graft survival rates are reportedly similar among recipients regardless of their diabetes status [3,4]. However, patients with diabetic nephropathy often have cardiovascular complications, and they may be hesitant to undergo kidney transplantation as a form of renal replacement therapy [5]. Furthermore, a lower survival rate has been reported among transplant recipients with pre-existing diabetes because of their increased risks of cardiovascular and infectious diseases [6,7]. The maintenance of an appropriate concentration of immunosuppressive agents is important for maximizing patient and graft survival after kidney transplantation, and it helps to minimize the side effects of immunosuppressive agents.

Mycophenolate mofetil (MMF) is a commonly used immunosuppressant that is metabolized to mycophenolic acid (MPA). MMF is rapidly absorbed in the upper gastrointestinal

tract, and the MPA blood concentration varies according to concomitant medication use; thus, therapeutic drug monitoring (TDM) is needed [8] to maintain an appropriate area under the blood concentration–time curve (AUC). Previous randomized controlled trials demonstrated that MPA-focused TDM in patients with a kidney transplantation significantly reduced the incidence of acute allograft rejection (AR) compared with fixed-dose MPA [9,10].

In addition to diabetic nephropathy, diabetic gastroenteropathy is a major complication of diabetic autonomic neuropathy that is characterized by the impaired peristalsis of the intestinal tract. Drug absorption is reportedly delayed in patients with diabetic gastroenteropathy because of impaired peristalsis [10]. Furthermore, the time to the maximum concentration (T_{max}) of MPA is longer in renal transplant recipients with diabetic gastroparesis than in recipients without diabetes [11–14]. However, the prognostic impact of MPA-focused TDM on allograft prognosis has not been determined in patients with diabetes.

In this study, we investigated the pharmacokinetics of MPA in kidney transplant recipients with diabetes and examined the allograft prognosis in patients with a sufficient AUC of MPA after MPA-focused TDM.

2. Materials and Methods

2.1. Patients

We retrospectively analyzed 64 consecutive adults who underwent living-donor kidney transplantation with an MMF-based immunosuppressant regimen (CellCept™, Chugai Pharmaceutical Co. Ltd., Tokyo, Japan) at Kagawa University Hospital, between August 2003 and March 2013. The recipients of deceased-donor kidney transplantation and recipients who did not receive MMF-based regimens were excluded from this study. Informed consent was obtained from each participant in this study. The protocols, patient information, and informed consent forms were reviewed and approved by the Ethics Committee of Kagawa University (#H127-020).

2.2. Study Design

The 64 recipients were classified into 2 subgroups according to their diabetes status before transplantation: recipients with pre-existing diabetes mellitus comprised the DM group ($n = 15$) and recipients without diabetes mellitus comprised the non-DM group ($n = 49$). The diagnostic criteria for diabetes were $HbA1c \geq 6.5\%$ or the use of diabetes medications. The risk factors for diabetic autonomic neuropathy were evaluated by the type of diabetes, duration of diabetes, presence of retinopathy, insulin use, and oral medications in the DM group. The recipient immunological risk was assessed by ABO blood type compatibility, human leukocyte antigen (HLA) mismatch, and flow cytotoxic crossmatch tests.

The immunosuppressive regimens involved combinations of four drugs: methylprednisolone, MMF, calcineurin inhibitors (tacrolimus or cyclosporine), and basiliximab. The type of calcineurin inhibitor was not switched during the study. The allograft kidney function was evaluated using the estimated glomerular filtration rate (eGFR), as determined by the Modification of Diet in Renal Disease equation for Japanese patients [15]. Allograft eGFR was evaluated at 3, 12, and 36 months after kidney transplantation. Allograft kidney biopsy samples were obtained from protocol biopsies at 1 and 3 years after kidney transplantation. They were also obtained from episode biopsies. Acute allograft rejection, including borderline change, was defined as the total number of ARs and borderline changes based on the Banff score criteria [16].

2.3. Blood MPA Concentration

Blood MPA concentrations were determined by the Viva-E System (Siemens Healthineers, Tokyo, Japan) using the Emit 2000 MPA Assay (Siemens Healthineers, Tokyo, Japan), Emit 2000 Mycophenotic Calibrators (Siemens Healthineers), and Emit 2000 Mycophenotic Control (Siemens Healthineers) [17]. MMF administration was started 7 days before

ABO-compatible kidney transplantation and 14 days before ABO-incompatible kidney transplantation. The initial dose of MMF was 2000 mg; however, if the recipient's body weight was less than 60 kg, then the initial dose of MMF was 1500 mg. MMF was orally administered twice daily at 09:00 and 21:00 (approximately 2 h after meals).

MPA blood concentration data (e.g., trough blood concentration (C₀), T_{max}, maximum concentration (C_{max}), AUC from 0 to 12 h (AUC₀₋₁₂), and dose-normalized AUC) were determined at 3 weeks after kidney transplantation. These data were also collected at 3 and 12 months after kidney transplantation. The C₀ of MPA was defined as the blood MPA concentration, measured immediately before MMF administration.

For the AUC analysis, whole-blood samples were collected immediately before oral MPA administration at 09:00, as well as 1, 2, 4, 6, and 8 h after the morning dose. Samples were also collected shortly before the evening dose (i.e., 12 h after the morning dose). AUC₀₋₁₂ was calculated using the linear trapezoidal rule. After AUC analysis, the dose of MMF was adjusted to achieve MPA AUC₀₋₁₂ of 40–70 µg/h/mL. The dose-normalized AUC was calculated using the following calculating formula: MPA dose-normalized AUC = MPA AUC/MPA morning dose × 1000.

2.4. Statistical Analysis

All analyses were performed using SPSS Statistics, version 26.0 for Windows (IBM Japan, Tokyo, Japan). Non-normally distributed variables were expressed as the median and interquartile range (IQR), whereas normally distributed variables were expressed as the mean and standard deviation (SD). The Kolmogorov–Smirnov test was used to assess the normality of data distribution. Clinical variables were compared between the groups using the χ^2 test for categorical variables and the Student's *t*-test, one-way analysis of variance, or two-way analysis of variance for continuous variables. The log rank analysis was used to examine the rate of post-transplant AR. *p* < 0.05 indicated statistical significance.

3. Results

The baseline recipient characteristics stratified according to the diabetes status before transplantation are presented in Table 1. No significant differences were observed in age, sex, body mass index, dialysis vintage, or the morning dose of MMF between the two groups. Furthermore, no significant differences were observed in the doses and C₀ of tacrolimus or cyclosporine, or in the doses of prednisolone between the two groups. The HbA1c level was significantly higher in the DM group than in the non-DM group (*p* < 0.01). The number of HLA mismatch was significantly higher in the DM group than in the non-DM group (*p* = 0.04). The rate of positivity in the flow cytotoxic crossmatch tests was similar between the two groups.

Table 1. Baseline recipient characteristics stratified by the diabetes status.

	DM	Non-DM	<i>p</i> -Value
Recipients, <i>n</i>	15	49	
Age, years (SD)	51.1 (13.3)	47.9 (12.2)	0.39
Men, <i>n</i> (%)	11 (73%)	36 (73%)	1.00
Body mass index, kg/m ² (SD)	22.6 (3.7)	22.4 (4.3)	0.86
Dialysis vintage, months (IQR)	8.5 (4.8–36)	9.0 (0–46)	0.84
HbA1c, % (SD)	5.6 (0.6)	4.9 (0.4)	<0.01 *
MMF morning dose, mg (SD)	696 (107)	690 (108)	0.85
CyA/Tac (<i>n</i>)	2/13	6/43	1.00
CyA/Tac daily dose (mg)	175/5.8	203/4.6	0.55/0.19
CyA/Tac trough concentration (µg/L)	129/8.2	205/10.1	0.30/0.74
PSL daily dose (mg)	4.0 (0)	4.1 (0.5)	0.33
ABO-blood type incompatible, <i>n</i> (%)	7 (46%)	19 (39%)	0.76
HLA mismatch, <i>n</i> (SD)	4.7 (1.35)	3.5 (1.65)	0.04 *

Table 1. Cont.

	DM	Non-DM	p-Value
FCXM positive for T-cell, n (%)	0/9 (0%)	4/31 (12.9%)	0.56
FCXM positive for B-cell, n (%)	4/9 (44.4%)	9/31 (29.0%)	0.44

Continuous variables are described as the median (interquartile range (IQR)) or mean (standard deviation (SD)). Categorical variables are described as n (%). Abbreviations: DM, patients with diabetes mellitus; non-DM, patients without diabetes; MMF, mycophenolate mofetil; CyA, cyclosporine; Tac, tacrolimus; PSL, prednisolone; HLA, human leukocyte antigen; and FCXM, flow cytotoxic crossmatch. * $p < 0.05$.

The risk factors for diabetic autonomic neuropathy in the DM group are presented in Table 2. Only one patient had type 1 diabetes. The median duration of diabetes was 240 (156–252) months, and most patients had diabetic retinopathy ($n = 14/15$, 93%) and required insulin treatment. Only one patient was receiving dipeptidyl peptidase-4 inhibitor treatment.

Table 2. Risk factors for diabetic autonomic neuropathy in the DM group.

	Results
Type 1 diabetes	1 (7%)
Duration of diabetes, months (IQR)	240 (156–252)
Diabetic retinopathy, n (%)	14 (93%)
Use of insulin, n (%)	14 (93%)
Use of DPP-4 inhibitor, n (%)	1 (7%)
Use of GLP-1 receptor agonist, n (%)	0 (0%)

Values represent the median (interquartile range (IQR)) or n (%). Abbreviations: DM, patients with diabetes mellitus; DPP4, dipeptidyl peptidase-4; and GLP-1, glucagon-like peptide-1.

The total number of patients who required an MMF dose adjustment after the AUC assessment from 3 weeks to 3 months and from 3 months to 1 year was similar between the DM (13/30, 43%) and non-DM groups (52/98, 53%, $p = 0.41$).

The T_{max} of MPA at 3 weeks after transplantation was significantly longer in the DM group (mean (SD): 3.5 h (2.3)) than in the non-DM group (2.3 (1.4) h, $p = 0.02$). There were no significant differences in morning C_0 , C_{max} , AUC_{0-12} , or dose-normalized AUC of the MPA between the two groups (Table 3).

Table 3. Pharmacokinetic profile of mycophenolic acid at 3 weeks after transplantation.

	DM	Non-DM	p-Value
Recipients, n	15	49	
T_{max} (h)	3.5 (2.3)	2.3 (1.4)	0.02 *
Morning trough levels (mg/L)	3.6 (2.4)	3.3 (1.9)	0.63
C_{max} (mg/L)	8.4 (4.2)	10.7 (4.8)	0.11
AUC_{0-12} ($\mu\text{g}/\text{h}/\text{mL}$)	54.8 (25.9)	57.7 (23.7)	0.69
Dose-normalized AUC (mg/h/L) †	79.7 (40.1)	85.6 (37.4)	0.61

Values represent the mean (standard deviation) or n (%). Abbreviations: DM, patients with diabetes mellitus; non-DM, patients without diabetes; T_{max} , time to maximum concentration; C_{max} , maximum concentration; and AUC_{0-12} , area under the concentration–time curve from 0 to 12 h. † Dose-normalized AUC values were normalized to 1000 mg of mycophenolate mofetil. * $p < 0.05$.

The T_{max} of MPA at 3 months after transplantation was significantly longer in the DM group (mean (SD): 2.8 (2.1) h) than in the non-DM group (1.9 (1.1) h, $p = 0.02$). There were no significant differences in morning C_0 , AUC_{0-12} , or dose-normalized AUC between the two groups; however, the C_{max} at 3 months after transplantation was significantly lower in the DM group (mean (SD): 8.2 (4.4) mg/dL) than in the non-DM group (11.5 (5.5) mg/dL, $p = 0.04$, Table 4).

Table 4. Pharmacokinetic profile of mycophenolic acid at 3 months after transplantation.

	DM	Non-DM	<i>p</i> -Value
Recipients, <i>n</i>	15	49	
T _{max} (h)	2.8 (2.1)	1.9 (1.1)	0.02 *
Morning trough levels (mg/L)	3.5 (2.0)	3.0 (1.9)	0.39
C _{max} (mg/L)	8.2 (4.4)	11.5 (5.5)	0.04 *
AUC ₀₋₁₂ (μg/h/mL)	51.2 (19.8)	53.8 (24.6)	0.72
Dose-normalized AUC (mg/h/L) †	90.1 (45.5)	110.0 (58.6)	0.25

Values represent the mean (standard deviation) or *n* (%). Abbreviations: DM, patients with diabetes mellitus; non-DM, patients without diabetes; T_{max}, time to maximum concentration; C_{max}, maximum concentration; and AUC₀₋₁₂, area under the concentration-time curve from 0 to 12 h. † Dose-normalized AUC values were normalized to 1000 mg of mycophenolate mofetil. * *p* < 0.05.

MPA pharmacokinetics at 3 weeks and 3 months after transplantation is presented in Figure 1. At 3 weeks and 3 months after transplantation, the C_{max} of MPA tended to be lower in the DM group than in the non-DM group, whereas the T_{max} of MPA was significantly longer in the DM group (* *p* < 0.05). However, the MPA blood concentration tended to be higher in the DM group after 6 h of administration, whereas the AUC₀₋₁₂ was equivalent between the groups.

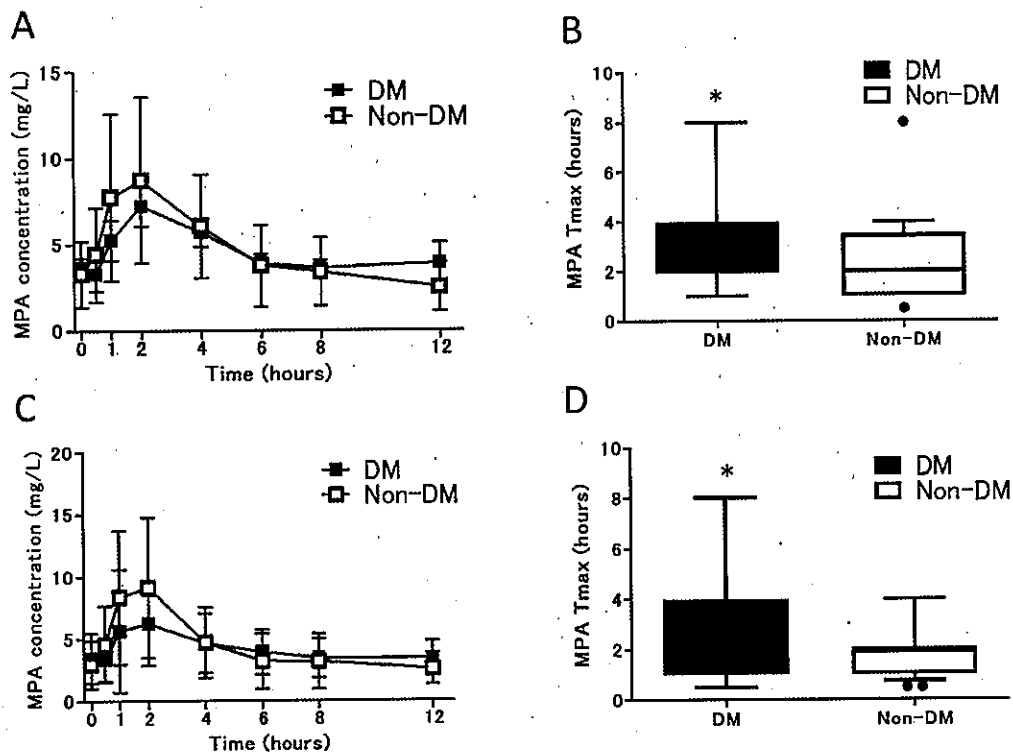


Figure 1. MPA pharmacokinetics at 3 weeks and 3 months in the DM and Non-DM groups. (A) Mean concentration–time profile of MPA at 3 weeks, (B) T_{max} of MPA at 3 weeks, (C) mean concentration–time profile of MPA at 3 months, and (D) T_{max} of MPA at 3 months. Abbreviations: MPA, mycophenolic acid; T_{max}, time to maximum concentration; DM, patients with diabetes; and non-DM, patients without diabetes.

The allograft eGFR and AR rate are presented in Figure 2. The allograft eGFR did not differ between the 2 groups from 3 to 36 months after transplantation (Figure 2A), and the AR rate, including the incidence of borderline change, was also similar between the 2 groups (Figure 2B). Most instances of AR involved borderline changes (non-DM group, 27/28; DM group, 8/10; *p* = 0.16) that did not require additional immunosuppressive

treatment. BK virus nephropathy, patient death, and graft loss were not observed in either group during the observation period.

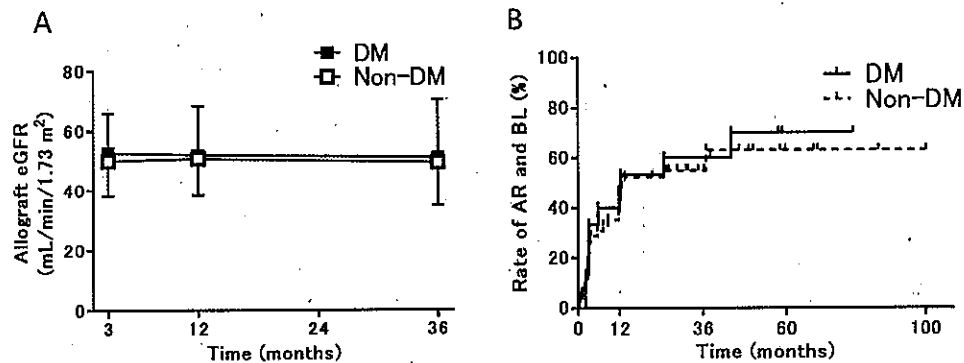


Figure 2. Allograft eGFR and AR incidence in the DM and non-DM groups. (A) Allograft eGFR at 3, 12, and 36 months after transplantation and (B) the cumulative incidence of AR, including BL. Abbreviations: DM, patients with diabetes; non-DM, patients without diabetes; eGFR, estimated glomerular filtration rate; AR, acute rejection; and BL, borderline change.

4. Discussion

In this study, we clarified the pharmacokinetic characteristics of MPA in Japanese kidney transplant recipients with diabetes. Pharmacokinetics analysis of MPA in kidney transplant recipients with diabetes revealed a longer T_{max} and lower C_{max} compared with the results in recipients without diabetes; however, we could control AUC_{0-12} within the target range among recipients regardless of their diabetes status. We also demonstrated that the rates of AR and graft function were similar in recipients with and without diabetes who achieved an equivalent AUC of MPA.

Patients with end-stage renal disease caused by diabetes have higher cardiovascular risk and mortality rates than patients with other underlying diseases [18]. Although kidney transplantation reportedly improves patient prognosis, compared with the effects of dialysis [19], there is a need to understand the specific pharmacokinetics of patients with diabetes. A previous study revealed slow drug absorption in recipients with diabetes because of the delayed excretion of gastric contents, which resulted in a longer T_{max} of MPA [11,12,14]. It has been reported that the severity of diabetic autonomic neuropathy, including diabetic gastroenteropathy, is associated with the severity of diabetic retinopathy and diabetic nephropathy [20]. Because the patients with diabetes in this study had a longer duration of diabetes and a higher prevalence of retinopathy, we considered them to comprise a population with a higher severity of diabetic autonomic neuropathy, including diabetic gastroenteropathy. In the present study, a significantly longer T_{max} of MPA was observed at both 3 weeks and 3 months after transplantation in recipients with pre-existing diabetes. Furthermore, a lower C_{max} of MPA was observed in recipients with diabetes at 3 months after transplantation. These results suggest that dose-controlled MMF management for kidney transplant recipients with diabetes can increase the risk of acute rejection. A previous report illustrated that pre-existing diabetes in kidney transplant recipients was an independent risk factor for cellular rejection [21]. In the present study, although the rate of HLA mismatch was higher in the DM group, the rate of AR, including borderline change, was similar between the groups. These data indicated that the diabetic group in this study was not an immunological high-risk group. It is unclear whether diabetes-related delayed drug absorption alone is a risk factor for AR, although it may be a contributing factor. Therefore, MPA-focused TDM is presumably useful, especially in recipients with pre-existing diabetes.

In this study, we performed MPA dose adjustment according to the results of AUC analysis and observed equivalent allograft kidney function and rejection rates in recipients with and without pre-existing diabetes. The AR incidence reportedly decreases when the AUC_{0-12} of MPA is maintained above 30–40 $\mu\text{g}/\text{h}/\text{mL}$ [22–24]. However, the side effect

frequency reportedly increases when the AUC of MPA exceeds 60 $\mu\text{g}/\text{h}/\text{mL}$ [25]. The Emit 2000 method was used in our study to measure MPA blood concentrations. This method produces 10–20% greater values than high-performance liquid chromatography [26]. Accordingly, we controlled the AUC of MPA at approximately 40–70 $\mu\text{g}/\text{h}/\text{mL}$. In this study, AUC measurements were performed before transplantation and at 3 weeks and 3 months after transplantation. The results were used to guide dose adjustment to maintain the AUC of MPA within the target range. Therefore, the AUC of MPA in both groups was maintained at approximately 50 $\mu\text{g}/\text{h}/\text{mL}$ at 3 weeks and 3 months after transplantation. The transplant prognosis did not differ between the groups. These findings indicated that the delayed drug absorption of MPA in patients with diabetes did not have a substantial prognostic impact when a sufficient AUC of MPA was maintained.

There were some limitations in our study because of its small-scale and cross-sectional design. First, the usefulness of TDM-guided controlled dosing compared with fixed dosing could not be confirmed. Second, because the study population was comparatively small and the observation period was short, we believe that the results of this study should be considered as preliminary data. Additional large-scale and long-term observations are needed. Third, the current study design did not allow for comparisons of patients who did and did not undergo TDM in the DM group, and, thus, it was not possible to determine whether a longer T_{max} or lower C_{max} directly affected the prognosis after transplantation. Fourth, because our study population was not an immunological high-risk group, we included borderline changes as AR. For a more accurate analysis, it may be necessary to evaluate AR as an outcome in high-risk populations. Transplant prognosis is strongly affected by both AUC of MPA and other factors, including the AUC of calcineurin inhibitors and background factors, such as surgery, primary disease, and donor characteristics. Thus, we were unable to evaluate the strength of the relationship between the AUC of MPA and the transplant prognosis. Future evaluations that adjust for these confounding factors in larger populations are needed.

In conclusion, a longer T_{max} and lower C_{max} of MPA were observed in kidney transplant recipients with diabetes; however, acceptable allograft prognosis was observed in patients with sufficient AUC_{0-12} of MPA under MPA-focused TDM.

Author Contributions: E.N. and T.S. designed the study, interpreted and analyzed data and wrote the manuscript; R.T. and N.U. helped design the study, performed pre-implantation biopsies and edited the manuscript; E.I. performed morphological analysis of allograft biopsies; K.Y. performed the measurement of MPA. All authors including Y.K., K.O., M.S. and T.M. critically reviewed the manuscript. All authors have read and agreed to the published version of the manuscript.

Funding: This work was supported in part by a grant-in-aid for scientific research from the Ministry of Education, Culture, Sports, Science and Technology of Japan (#24791653, #18K09195 and #21K09400 to T.S.).

Institutional Review Board Statement: All procedures performed in this study and informed consent forms were reviewed and approved by the Ethics Committee of Kagawa University (#H27-020) and were consistent with the 1964 Declaration of Helsinki and its later amendments or comparable ethical standards.

Informed Consent Statement: Not applicable.

Data Availability Statement: Not applicable.

Acknowledgments: We thank Joe Barber from Edanz (<https://jp.edanz.com/ac>) for editing a draft of this manuscript.

Conflicts of Interest: The authors declare no conflict of interest.

References

1. White, S.; Chadban, S. Diabetic kidney disease in Australia: Current burden and future projections. *Nephrology* **2014**, *19*, 450–458. [CrossRef]
2. Grace, B.S.; Clayton, P.; McDonald, S.P. Increases in renal replacement therapy in Australia and New Zealand: Understanding trends in diabetic nephropathy. *Nephrology* **2012**, *17*, 76–84. [CrossRef]
3. Bittar, J.; Cepeda, P.; de la Fuente, J.; Douthart, W.; de Arteaga, J.; Massari, P.U. Renal transplantation in diabetic patients. *Transplant. Proc.* **2006**, *38*, 895–898. [CrossRef]
4. Boucek, P.; Saudek, F.; Pokorna, E.; Vitko, S.; Adamec, M.; Koznarova, R.; Lanska, V. Kidney transplantation in type 2 diabetic patients: A comparison with matched non-diabetic subjects. *Nephrol. Dial. Transplant.* **2002**, *17*, 1678–1683. [CrossRef]
5. Nitsch, D.; Burden, R.; Steenkamp, R.; Ansell, D.; Byrne, C.; Caskey, F.; Roderick, P.; Feest, T. Patients with diabetic nephropathy on renal replacement therapy in England and Wales. *QJM Int. J. Med.* **2007**, *100*, 551–560. [CrossRef]
6. Rocha, A.; Malheiro, J.; Martins, L.S.; Fonseca, I.; Dias, L.; Pedroso, S.; Almeida, M.; Henriques, A.C. Kidney transplantation in type 2 diabetic patients: A matched survival analysis. *Transplant. Proc.* **2013**, *45*, 2141–2146. [CrossRef]
7. Suzuki, T.; Nakao, T.; Harada, S.; Nakamura, T.; Koshino, K.; Sakai, K.; Nobori, S.; Ito, T.; Ushigome, H.; Yoshimura, N. Results of kidney transplantation for diabetic nephropathy: A single-center experience. *Transplant. Proc.* **2014**, *46*, 464–466. [CrossRef] [PubMed]
8. Van Gelder, T. Mycophenolate blood level monitoring: Recent progress: Minireview. *Am. J. Transplant.* **2009**, *9*, 1495–1499. [CrossRef] [PubMed]
9. Van Gelder, T.; Silva, H.T.; De Fijter, J.W.; Budde, K.; Kuypers, D.; Tyden, G.; ComLohmus, A.; Sommerer, C.; Hartmann, A.; Le Meur, Y.; et al. Paring mycophenolate mofetil regimens for de novo renal transplant recipients: The fixed-dose concentration-controlled trial. *Transplantation* **2008**, *86*, 1043–1051. [CrossRef] [PubMed]
10. Gwilt, P.R.; Nahhas, R.R.; Tracewell, W.G. The effects of diabetes mellitus on pharmacokinetics and pharmacodynamics in humans. *Clin. Pharm.* **1991**, *20*, 477–490. [CrossRef] [PubMed]
11. Akhlaghi, F.; Patel, C.G.; Zuniga, X.P.; Halilovic, J.; Preis, I.S.; Gohh, R.Y. Pharmacokinetics of mycophenolic acid and metabolites in diabetic kidney transplant recipients. *Drug Monit.* **2006**, *28*, 95–101. [CrossRef]
12. Van Hest, R.M.; Mathôt, R.A.A.; Vulto, A.G.; Meur YLe Van Gelder, T. Mycophenolic acid in diabetic renal transplant recipients: Pharmacokinetics and application of a limited sampling strategy. *Drug Monit.* **2004**, *26*, 620–625. [CrossRef]
13. Patel, C.G.; Richman, K.; Yang, D.; Yan, B.; Gohh, R.Y.; Akhlaghi, F. Effect of diabetes mellitus on mycophenolate sodium pharmacokinetics and inosine monophosphate dehydrogenase activity in stable kidney transplant recipients. *Drug Monit.* **2007**, *29*, 735–742. [CrossRef]
14. Van Hest, R.M.; Mathot, R.A.A.; Pescovitz, M.D.; Gordon, R.; Mamelok, R.D.; Van Gelder, T. Explaining variability in mycophenolic acid exposure to optimize mycophenolate mofetil dosing: A population pharmacokinetic meta-analysis of mycophenolic acid in renal transplant recipients. *J. Am. Soc. Nephrol.* **2006**, *17*, 871–880. [CrossRef] [PubMed]
15. Matsuo, S.; Imai, E.; Horio, M.; Yasuda, Y.; Tomita, K.; Nitta, K.; Yamagata, K.; Tomino, Y.; Yokoyama, H.; Hishida, A.; et al. Revised equations for estimated GFR from serum creatinine in Japan. *Am. J. Kidney Dis.* **2009**, *53*, 982–992. [CrossRef]
16. Haas, M.; Loupy, A.; Lefaucheur, C.; Roufosse, C.; Glotz, D.; Seron, B.; Nankivell, P.F.; Halloran, R.B.; Colvin Enver, A.; NAlachkar, S.; et al. The Banff 2017 Kidney Meeting Report: Revised diagnostic criteria for chronic active T cell-mediated rejection, antibody-mediated rejection, and prospects for integrative endpoints for next-generation clinical trials. *Am. J. Transplant.* **2018**, *18*, 293–307. [CrossRef]
17. Yamaguchi, K.; Fukuoka, N.; Kimura, S.; Watanabe, M.; Tani, K.; Tanaka, H.; Sofue, T.; Kosaka, S.; Inui, M.; Takehi, Y.; et al. Limited sampling strategy for the estimation of mycophenolic acid area under the concentration-time curve treated in Japanese living-related renal transplant recipients with concomitant extended-release tacrolimus. *Biol. Pharm. Bull.* **2013**, *36*, 1036–1039. [CrossRef]
18. Chantrel, F.; Enache, I.; Bouiller, M.; Kolb, I.; Kunz, K.; Petitjean, P.; Moulin, B.; Hannedouche, T. Abysmal prognosis of patients with type 2 diabetes entering dialysis. *Nephrol. Dial. Transplant.* **1999**, *14*, 129–136. [CrossRef] [PubMed]
19. Hirschl, M.M. Renal transplantation in patients with type 2 diabetes mellitus. *Nephrol. Dial. Transplant.* **1995**, *10* (Suppl. S7), 58–60. [CrossRef]
20. Hotta, N.; Kawamori, R.; Fukuda, M.; Shigeta, Y. Long-term clinical effects of epalrestat, an aldose reductase inhibitor, on progression of diabetic neuropathy and other microvascular complications: Multivariate epidemiological analysis based on patient background factors and severity of diabetic neuropathy. *Diabetes Med.* **2012**, *29*, 1529–1533.
21. Johal, S.; Jackson-Spence, F.; Gillott, H.; Tahir, S.; Mytton, J.; Evison, F.; Stephenson, B.; Nath, J.; Sharif, A. Pre-existing diabetes is a risk factor for increased rates of cellular rejection after kidney transplantation: An observational cohort study. *Diabetes Med.* **2017**, *34*, 1067–1073. [CrossRef]
22. Hale, M.D.; Nicholls, A.J.; Bullingham, R.E.S.; Hené, R.; Hoitsma, A.; Squifflet, J.P.; Squifflet MD, W.; Weimar, M.D.; Yves Vanrenterghem, M.D.; Fokko, J.; et al. The pharmacokinetic-pharmacodynamic relationship for mycophenolate mofetil in renal transplantation. *Clin. Pharm. Ther.* **1998**, *64*, 672–683. [CrossRef]
23. Kiberd, B.A.; Lawen, J.; Fraser, A.D.; Keough-Ryan, T.; Belitsky, P. Early adequate mycophenolic acid exposure is associated with less rejection in kidney transplantation. *Am. J. Transplant.* **2004**, *4*, 1079–1083. [CrossRef] [PubMed]

24. Takahashi, K.; Ochiai, T.; Uchida, K.; Yasumura, T.; Ishibashi, M.; Suzuki, S.; Otsubo, O.; Isono, K.; Takagi, H.; Oka, T. Pilot study of mycophenolate mofetil (RS-61443) in the prevention of acute rejection following renal transplantation in Japanese patients. RS-61443 Investigation Committee—Japan. *Transplant. Proc.* **1995**, *27*, 1421–1424. [PubMed]
25. Mourad, M.; Malaise, J.; Eddour, D.C.; De Meyer, M.; König, J.; Schepers, R.; Squifflet, J.P.; Wallemacq, P. Pharmacokinetic basis for the efficient and safe use of low-dose mycophenolate mofetil in combination with tacrolimus in kidney transplantation. *Clin. Chem.* **2001**, *47*, 1241–1248. [CrossRef] [PubMed]
26. Westley, I.S.; Sallustio, B.C.; Morris, R.G. Validation of a high-performance liquid chromatography method for the measurement of mycophenolic acid and its glucuronide metabolites in plasma. *Clin. Biochem.* **2005**, *38*, 824–829. [CrossRef] [PubMed]