

学 位 論 文

Randomized phase III trial of regorafenib in metastatic colorectal cancer: analysis of the CORRECT Japanese and non-Japanese subpopulations.

吉 野 孝 之

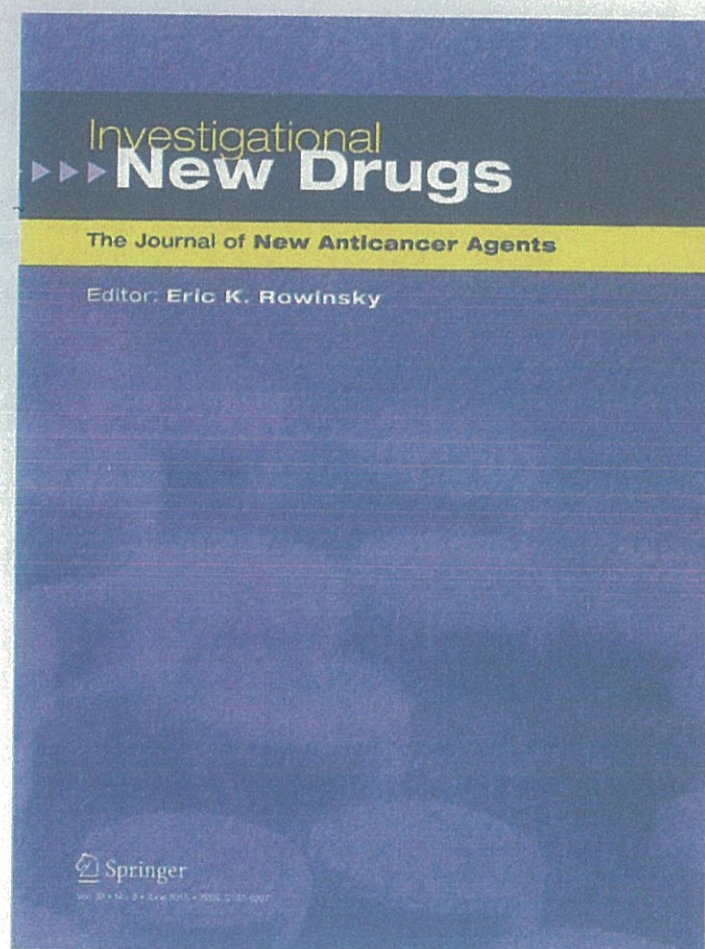
*Randomized phase III trial of regorafenib
in metastatic colorectal cancer: analysis of
the CORRECT Japanese and non-Japanese
subpopulations*

**Takayuki Yoshino, Yoshito Komatsu,
Yasuhide Yamada, Kentaro Yamazaki,
Akihito Tsuji, Takashi Ura, Axel
Grothey, Eric Van Cutsem, et al.**

Investigational New Drugs
The Journal of New Anticancer Agents

ISSN 0167-6997
Volume 33
Number 3

Invest New Drugs (2015) 33:740-750
DOI 10.1007/s10637-014-0154-x



Your article is published under the Creative Commons Attribution license which allows users to read, copy, distribute and make derivative works, as long as the author of the original work is cited. You may self-archive this article on your own website, an institutional repository or funder's repository and make it publicly available immediately.

Randomized phase III trial of regorafenib in metastatic colorectal cancer: analysis of the CORRECT Japanese and non-Japanese subpopulations

Takayuki Yoshino · Yoshito Komatsu · Yasuhide Yamada · Kentaro Yamazaki · Akihito Tsuji · Takashi Ura · Axel Grothey · Eric Van Cutsem · Andrea Wagner · Frank Cihon · Yoko Hamada · Atsushi Ohtsu

Received: 3 July 2014 / Accepted: 29 August 2014 / Published online: 12 September 2014
© The Author(s) 2014. This article is published with open access at Springerlink.com

Summary Background In the international, phase III, randomized, double-blind CORRECT trial, regorafenib significantly prolonged overall survival (OS) versus placebo in patients with metastatic colorectal cancer (mCRC) that had progressed on all standard therapies. This *post hoc* analysis evaluated the efficacy and safety of regorafenib in Japanese and non-Japanese subpopulations in the CORRECT trial. **Methods** Patients were randomized 2 : 1 to regorafenib

160 mg once daily or placebo for weeks 1–3 of each 4-week cycle. The primary endpoint was OS. Outcomes were assessed using descriptive statistics. **Results** One hundred Japanese and 660 non-Japanese patients were randomized to regorafenib ($n=67$ and $n=438$) or placebo ($n=33$ and $n=222$). Regorafenib had a consistent OS benefit in the Japanese and non-Japanese subpopulations, with hazard ratios of 0.81 (95 % confidence interval [CI] 0.43–1.51) and 0.77 (95 % CI 0.62–

Electronic supplementary material The online version of this article (doi:10.1007/s10637-014-0154-x) contains supplementary material, which is available to authorized users.

T. Yoshino (✉)
Department of Gastroenterology and Gastrointestinal Oncology,
National Cancer Center Hospital East, 6-5-1, Kashiwanoha,
Kashiwa 277-8577, Chiba, Japan
e-mail: tyoshino@east.ncc.go.jp

Y. Komatsu
Department of Cancer Chemotherapy, Hokkaido University Hospital
Cancer Center, Sapporo, Japan

Y. Yamada
Gastrointestinal Oncology Division, National Cancer Center
Hospital, Tokyo, Japan

K. Yamazaki
Gastrointestinal Oncology, Shizuoka Cancer Center, Nagaizumi-cho,
Sunto-gun, Shizuoka, Japan

A. Tsuji
Department of Medical Oncology, Kochi Health Sciences Center,
Kochi, Japan

T. Ura
Department of Clinical Oncology, Aichi Cancer Center Hospital,
Chikusa-ku, Nagoya, Aichi, Japan

A. Grothey
Department of Oncology, Mayo Clinic, Rochester, MN, USA

B. Van Cutsem
Digestive Oncology, University Hospitals and KU Leuven, Leuven,
Belgium

A. Wagner
Global Clinical Development–Oncology, Bayer Pharma AG, Berlin,
Germany

F. Cihon
Global Biostatistics, Bayer HealthCare Pharmaceuticals, Whippany,
NJ, USA

Y. Hamada
Medical Affairs, Oncology & Hematology, Bayer Yakuhin Ltd,
Osaka, Japan

A. Ohtsu
Exploratory Oncology Research & Clinical Trial Center, National
Cancer Center Hospital East, Kashiwa, Chiba, Japan

Present Address:

A. Tsuji
Kobe City Hospital Organization, Kobe City Medical Center General
Hospital, Kobe, Japan

0.94), respectively. Regorafenib-associated hand–foot skin reaction, hypertension, proteinuria, thrombocytopenia, and lipase elevations occurred more frequently in the Japanese subpopulation than in the non-Japanese subpopulation, but were generally manageable. **Conclusion** Regorafenib appears to have comparable efficacy in Japanese and non-Japanese subpopulations, with a manageable adverse-event profile, suggesting that this agent could potentially become a standard of care in patients with mCRC.

Keywords Regorafenib · Protein kinase inhibitors · Japanese · Colorectal cancer · Clinical trial · Phase III

Introduction

Colorectal cancer (CRC) is the second most common cancer in Japan, with estimated age-standardized incidence and mortality rates of 32.2 and 11.9 per 100,000 population, respectively, in 2012 [1]. An estimated 1.4 million new cases of CRC occur worldwide each year, with almost 700,000 deaths attributed to the disease, resulting in CRC being one of the most important malignancies in the world [1].

More than 40 % of patients in Japan have locally advanced or metastatic CRC (mCRC) at diagnosis [2], for which standard therapy generally consists of chemotherapy based on a fluoropyrimidine plus either oxaliplatin or irinotecan, combined with anti-vascular endothelial growth factor (VEGF) therapy such as bevacizumab or ziv-aflibercept. Patients with *KRAS* wild-type tumors also receive cetuximab or panitumumab [3–5]. However, until recently, no further options were available for patients whose disease progressed on available standard therapies.

Regorafenib is an orally administered multikinase inhibitor that blocks the activity of a number of protein kinases associated with angiogenesis (VEGF receptors 1–3 and TIE2), oncogenesis (KIT, RET, RAF1, BRAF, and BRAF V600E) and the tumor microenvironment (platelet-derived growth factor receptor and fibroblast growth factor receptor) [6]. The international multicentre, phase III CORRECT (patients with metastatic COloRectal cancer treated with RBgorafenib or plaCebo after failure of standard Therapy) trial compared regorafenib with placebo in patients with mCRC that had progressed on all available standard therapies or who were unable to tolerate standard therapies [7]. On the basis of the results of CORRECT, regorafenib was approved for the treatment of mCRC that has progressed on standard therapy by the US Food and Drug Administration in September 2012 [8], by the Japanese Ministry of Health, Labor, and Welfare in March 2013 [9], and by the European Medicines Agency in August 2013 [10].

CORRECT met its primary endpoint at a planned, formal interim analysis, with an overall survival (OS) hazard ratio

(HR) for regorafenib versus placebo of 0.77 (95 % confidence interval [CI] 0.64–0.94; one-sided $p=0.0052$) [7]. Progression-free survival (PFS) was also significantly greater in the regorafenib group than in the placebo group (HR 0.49, 95 % CI 0.42–0.58; one-sided $p<0.0001$). Furthermore, regorafenib showed OS and PFS benefit in both *KRAS*-wild-type and *KRAS*-mutant tumor subgroups [7].

Previous trials of kinase inhibitors have shown differing adverse-event profiles in Japanese and non-Japanese patients. Subpopulation analyses of two international phase III studies comparing axitinib versus sorafenib and everolimus versus placebo in patients with metastatic renal cancer showed that Japanese patients had higher rates of several adverse events, including hand–foot skin reaction (HFSR), than the overall trial population [11, 12]. Therefore, it was felt to be important to investigate the safety and efficacy profile of regorafenib in Japanese and non-Japanese patients in the CORRECT trial.

This *post hoc* analysis was conducted to assess the efficacy, safety, population pharmacokinetics (PK), and quality-of-life (QoL) effects of regorafenib in the Japanese and non-Japanese subpopulations in the CORRECT trial. In addition, the potential relationship between patients' baseline body size and the occurrence of regorafenib-associated adverse events was assessed.

Materials and methods

CORRECT was a phase III, randomized, double-blind, placebo-controlled trial involving 114 centers in 16 countries. Eligibility criteria, treatment schedule, endpoints, and statistical analysis criteria have been reported in detail previously [7]. Included patients were aged at least 18 years and had mCRC that had progressed during or within 3 months after the last dose of all available standard therapies for mCRC. Patients were randomized 2 : 1 to receive regorafenib 160 mg or placebo once daily for weeks 1–3 of each 4-week cycle, in combination with best supportive care. The primary endpoint of the trial was OS (time from randomization to death from any cause), while secondary efficacy endpoints included PFS (time from randomization to first radiological or clinical progression or death from any cause), objective response rate (ORR), and disease control rate (DCR). Safety, health-related QoL, and PK were also assessed. The trial required 582 deaths for the final analysis. The first formal interim analysis, to assess futility, was conducted when approximately 30 % of the expected total number of deaths had occurred. The second interim analysis, at about 70 % of the total expected deaths, evaluated both efficacy and futility. Monitoring boundaries were based on prespecified O'Brien–Fleming-type stopping boundaries. The primary and secondary efficacy time-to-event endpoints for the overall population were analyzed using a one-sided log-rank test stratified by the same

stratification factors as at randomization. The trial was registered at ClinicalTrials.gov, identifier NCT01103323.

Post hoc subpopulation analyses performed for Japanese and non-Japanese patients presented here were descriptive in nature, using Kaplan–Meier (KM) estimates and KM curves to analyze time-to-event parameters, such as OS and PFS. HR estimates with 95 % CIs were determined on the basis of an unstratified Cox regression model. For the subpopulation analyses, a HR (regorafenib over placebo) of less than 1 suggested a beneficial effect favoring regorafenib, whereas a HR of greater than 1 suggested an effect favoring placebo.

Health-related QoL was measured using the cancer-specific European Organisation for Research and Treatment of Cancer (EORTC) Quality of Life Questionnaire core-30 (QLQ-C30) [13], and the general-health EuroQol 5-dimension (EQ-5D) health utility index and visual analog scale (VAS) [14]. An analysis-of-covariance model was used to examine the time-adjusted area under the curve (AUC) of the EORTC QLQ-C30 global health status, EQ-5D health utility index, and EQ-5D VAS scores, with least-squares (LS) mean time-adjusted AUCs and 95 % CIs estimated for each treatment group and for the difference between treatment groups. QoL outcomes were also compared using descriptive statistics.

Blood samples for PK analysis were collected on day 15 of cycle 1 before administration of study drug, 2–4 h after administration, and 5–10 h after administration. The PK of regorafenib and its pharmacologically active metabolites, M2 (N-oxide metabolite) and M5 (N-oxide/N-desmethyl metabolite), were analyzed using a population PK model based on data collected during earlier studies of regorafenib. Regorafenib and metabolite PK data were pooled with concentration data from other studies of regorafenib monotherapy and analyzed using non-linear mixed-effects modeling. PK data were evaluated with historical data, without formal statistical analysis.

Results

Patient demographics and baseline disease characteristics

Results are based on the planned, formal interim analysis database, considered the final formal and definitive results, where the CORRECT trial met its primary endpoint showing that the regorafenib group had a statistically significant improvement in OS compared with placebo. A total of 933 non-Japanese patients were screened for inclusion at 95 centers in 15 countries between 30 April 2010 and 22 March 2011; of these, 660 patients were randomized to treatment with regorafenib ($n=438$) or placebo ($n=222$), while 656 received at least one dose of study treatment and were included in the safety population (regorafenib $n=435$, placebo $n=221$). The

ethnicity of the non-Japanese subpopulation consisted of 593 white, 14 black or African American, 11 non-Japanese Asian, and 42 other or not reported. A total of 119 Japanese patients were screened for inclusion at 19 centers in Japan between 17 November 2010 and 10 February 2011; of these, 100 patients were randomized to treatment with regorafenib ($n=67$) or placebo ($n=33$), while 97 received at least one dose of study treatment and were included in the safety population (regorafenib $n=65$, placebo $n=32$). The flow of patients in the Japanese subpopulation through the trial is shown in Online Resource 1 (Fig. S1).

In general, the baseline characteristics of the Japanese subpopulation were similar to those of the non-Japanese subpopulation (Table 1), with the exception of lower median bodyweight, lower median body-mass index (BMI), and a slightly greater proportion of patients with an Eastern Cooperative Oncology Group (ECOG) performance status of 0 in the Japanese subpopulation than in the non-Japanese subpopulation.

Treatment

Drug exposure in Japanese and non-Japanese subpopulations is shown in Table 2. The mean \pm standard deviation (SD) overall duration of regorafenib treatment (including time off drug and dose interruptions) was 10.3 ± 7.9 weeks (median 7.3; range 0.3–28.9) in the Japanese subpopulation and 12.3 ± 10.0 weeks (median 7.3; range 0.3–47.0) in the non-Japanese subpopulation. The mean \pm SD daily dose of regorafenib was 142.2 ± 20.2 mg (median 152.7; range 91.1–160.0) and 147.9 ± 18.3 mg (median 160.0; range 85.7–160.0), respectively.

Mean \pm SD regorafenib dose intensity, defined as the proportion of planned dose received, was 69.3 ± 21.2 % (median 71.4; range 9.5–100.0) in the Japanese subpopulation and 80.4 ± 19.3 % (median 83.3; range 9.5–114.3) in the non-Japanese population.

Regorafenib dose modifications due to drug-associated adverse events were more frequent in the Japanese than in the non-Japanese subpopulation, being reported in 84.6 and 51.3 % of patients, respectively. Rates of regorafenib discontinuation due to drug-associated adverse events were higher in the Japanese than in the non-Japanese subpopulation, but still low in both subpopulations (13.8 and 7.4 %, respectively).

Drug exposure in the Japanese and non-Japanese subpopulations receiving placebo (in terms of overall duration of treatment, actual daily dose, dose intensity, and discontinuation due to drug-related adverse events) was similar.

Efficacy

The HR for OS in the regorafenib group vs placebo was 0.81 (95 % CI 0.43–1.51) in the Japanese subpopulation and 0.77 (95 % CI 0.62–0.94) in the non-Japanese subpopulation, with

Table 1 Baseline demographics and characteristics of the Japanese and non-Japanese patient subpopulations in the CORRECT trial

	Japanese subpopulation		Non-Japanese subpopulation	
	Regorafenib (n=67)	Placebo (n=33)	Regorafenib (n=438)	Placebo (n=222)
Median age (range), years	63 (44–79)	61 (34–75)	61 (22–82)	61 (25–85)
Sex, n (%)				
Men	47 (70)	16 (49)	264 (60)	137 (62)
Women	20 (30)	17 (52)	174 (40)	85 (38)
Median bodyweight (range), kg	62.6 (35.5–108.0)	58.2 (34.0–89.7)	73.5 (38.5–169.6)	77.0 (43.0–156.0)
Median body mass index (range), kg/m ²	23.7 (15.4–34.3)	22.9 (13.9–29.9)	25.0 (14.4–47.3)	26.2 (17.2–50.4)
ECOG performance status, n (%)				
0	41 (61)	24 (73)	224 (51)	122 (55)
1	26 (39)	9 (27)	214 (49)	100 (45)
Primary site of disease, n (%)				
Colon	37 (55)	15 (46)	286 (65)	157 (71)
Rectum	28 (42)	18 (55)	123 (28)	51 (23)
Colon and rectum	2 (3)	0	28 (6)	14 (6)
Number of previous systemic anticancer therapies for metastatic disease, n (%)				
1–2	17 (25)	5 (15)	118 (27)	58 (26)
3	20 (30)	7 (21)	105 (24)	65 (29)
≥4	30 (45)	21 (64)	215 (49)	99 (45)
Time from diagnosis of metastatic disease to randomization, n (%)				
<18 months	8 (12)	2 (6)	83 (19)	47 (21)
≥18 months	59 (88)	31 (94)	355 (81)	175 (79)
KRAS mutation, n (%)				
No	26 (39)	18 (55)	179 (41)	76 (34)
Yes	39 (58)	14 (42)	234 (53)	143 (64)
Unknown	2 (3)	1 (3)	25 (6)	3 (1)

Abbreviation: ECOG, Eastern Cooperative Oncology Group

Table 2 Drug exposure in Japanese and non-Japanese patients

	Japanese subpopulation		Non-Japanese subpopulation	
	Regorafenib (n=65)	Placebo (n=32)	Regorafenib (n=435)	Placebo (n=221)
Overall duration of treatment, ^a weeks				
Mean±SD	10.3±7.9	7.3±4.7	12.3±10.0	7.9±5.3
Median (range)	7.3 (0.3–28.9)	7.0 (0.6–22.9)	7.3 (0.3–47.0)	7.0 (0.6–38.6)
Actual daily dose, mg				
Mean±SD	142.2±20.2	158.3±9.4	147.9±18.3	159.4±3.8
Median (range)	152.7 (91.1–160.0)	160.0 (107.0–160.0)	160.0 (85.7–160.0)	160.0 (121.6–160.0)
Dose intensity (%)				
Mean±SD	69.3±21.2	89.1±17.7	80.4±19.3	90.3±16.1
Median (range)	71.4 (9.5–100.0)	98.8 (19.1–100.0)	83.3 (9.5–114.3)	100.0 (19.1–100.0)
Patients with drug-related adverse events leading to:				
Dose modification, ^b n (%)	55 (84.6)	6 (18.8)	223 (51.3)	17 (7.7)
Permanent discontinuation, n (%)	9 (13.8)	0	32 (7.4)	3 (1.4)

^a Includes time off drug and dose interruptions^b Includes dose interruptions and reductions

Abbreviation: SD, standard deviation

no apparent difference between subpopulations (Fig. 1a and c). The median OS in the regorafenib group was 6.6 months (range 0.2–7.5) in the Japanese subpopulation and 6.2 months (range 0.2–13.2) in the non-Japanese subpopulation, while median OS in the placebo group was 7.0 months (range 0.03–7.5) in the Japanese population and 4.9 months (range 0.4–13.6) in the non-Japanese subpopulation.

In both the Japanese and the non-Japanese subpopulations, PFS was greater in regorafenib-treated patients than in placebo recipients, with HRs of 0.47 (95 % CI 0.30–0.74) and 0.50 (95 % CI 0.42–0.60), respectively (Fig. 1b and d). The median PFS in regorafenib recipients was 1.9 months (range 0.03–5.7) in the Japanese subpopulation and 1.9 months (range 0.03–11.1) in the non-Japanese subpopulation, while median PFS in the placebo groups was 1.7 months (range 0.03–5.2) and 1.7 months (range 0.03–9.1) in the Japanese and non-Japanese subpopulations, respectively.

In the regorafenib group, DCRs of 40 and 41 % were observed in the Japanese and non-Japanese subpopulations, respectively, compared with 15 % in both Japanese and non-Japanese subpopulations in the placebo group. Overall response was similar in the regorafenib and placebo groups, with ORRs of 2 and 1 % reported in the regorafenib-treated Japanese and non-Japanese subpopulations, respectively, consisting of partial responses in one Japanese patient and four non-Japanese patients. Among placebo recipients, no responses were reported in the Japanese subpopulation and one partial response (<1 %) was reported in the non-Japanese

subpopulation. Reduction in tumor volume from baseline was observed in 33 % and 27 % of the regorafenib-treated Japanese and non-Japanese subpopulations, respectively. Changes in target lesion size in the Japanese and non-Japanese subpopulations are shown in Fig. 2.

Safety

In the Japanese and non-Japanese subpopulations, treatment-related adverse events of any grade were observed in 99 and 92 % of regorafenib-treated patients, respectively, and in 59 and 61 % of placebo recipients, respectively (Table 3). Grade 3 or greater treatment-associated adverse events were reported in 80 and 51 % of regorafenib-treated patients, respectively, and 22 and 13 % of placebo recipients, respectively. No clear relationship was found between the incidence of regorafenib-associated adverse events and baseline BMI in the Japanese and non-Japanese subpopulation (Table 4).

Regorafenib-associated adverse events of any grade occurring at a rate at least 20 % greater in the Japanese subpopulation than in the non-Japanese subpopulation were HFSR (80 vs 42 %), hypertension (60 vs 23 %), proteinuria (40 vs 2 %), thrombocytopenia (39 vs 9 %) and lipase elevations (25 vs 2 %). In contrast, the incidence of diarrhea was lower in the Japanese subpopulation than in the non-Japanese subpopulation (any grade: 22 vs 36 %; grade ≥ 3 : 2 vs 8 %).

Serious drug-associated adverse events were reported in 9 and 12 % of the regorafenib-treated Japanese and non-

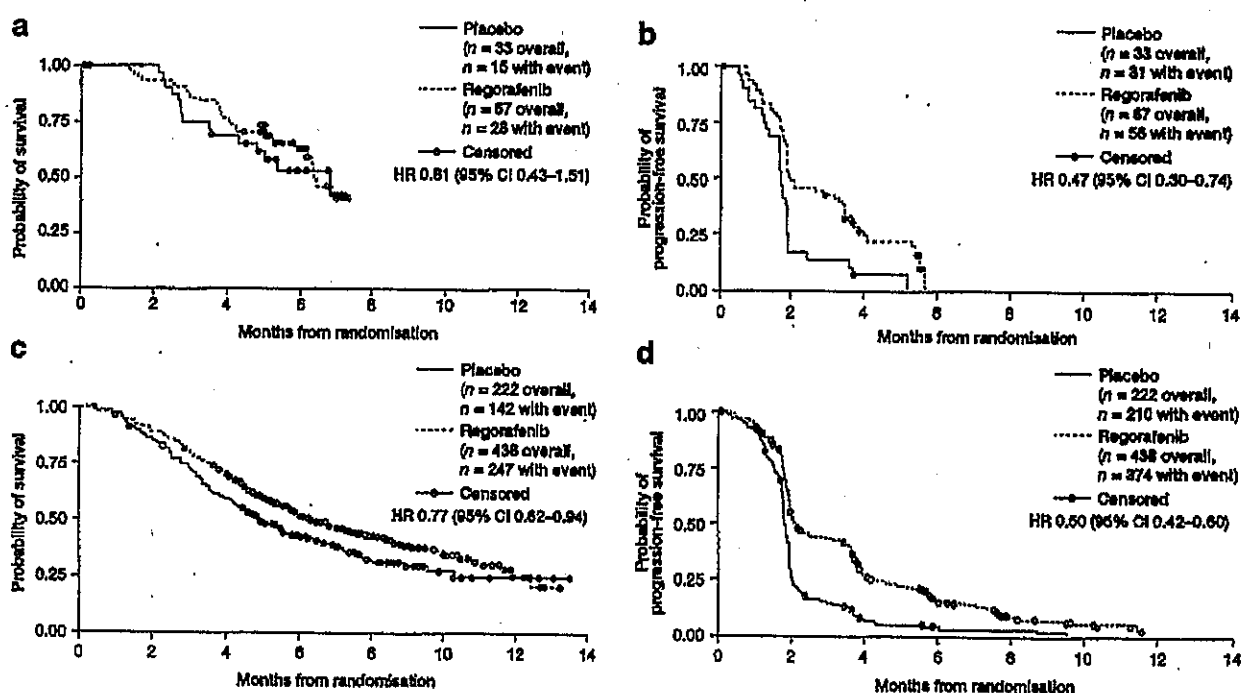


Fig. 1 Kaplan-Meier curves showing overall survival and progression-free survival in Japanese (a and b, respectively) and non-Japanese patients (c and d, respectively)

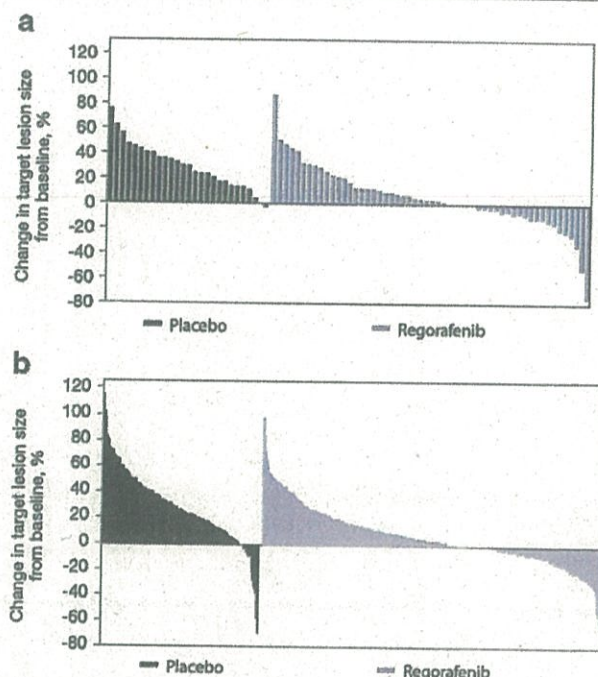


Fig. 2 Maximum percentage change in target lesion size in (a) Japanese patients and (b) non-Japanese patients

Japanese subpopulations, respectively, compared with 9 and 3 % of the Japanese and non-Japanese subpopulation receiving placebo, respectively. The most frequent regorafenib-associated serious adverse event in the Japanese subpopulation was anorexia, reported in three patients (5 %).

Regorafenib-associated liver function adverse events were reported more frequently in the Japanese subpopulation than in the non-Japanese subpopulation, although the incidence of grade 3–4 liver events was low in both subpopulations. Alanine aminotransferase (ALT) elevations were reported in 12 % and fewer than 1 % of the regorafenib-treated Japanese and non-Japanese subpopulations, respectively, aspartate aminotransferase (AST) elevations in 19 and 2 %, respectively, and bilirubin elevations in 15 and 8 %, respectively. One case of lethal liver dysfunction related to regorafenib was observed in the Japanese subpopulation. The patient was a 62-year-old man with liver metastases and an ECOG performance status of 0 at trial entry. Forty-three days after starting regorafenib treatment, the patient presented with grade 3 jaundice and grade 2 liver dysfunction, and regorafenib treatment was permanently discontinued the following day. Laboratory test results showed elevated alkaline phosphatase (634 U/L; local laboratory range not provided), total bilirubin ($7.7 \times$ upper limit of normal [ULN] [9.2 mg/dL]), AST ($30.8 \times$ ULN [1261 U/L]) and ALT ($31 \times$ ULN [1393 U/L]). The patient's platelet count was also depressed ($91 \times 10^3/\text{mm}^3$; range not provided). The patient's hepatitis status was confirmed as negative. The severity of liver dysfunction increased to grade 5 at 43 days after treatment discontinuation.

Population pharmacokinetics

Data from 381 patients (Japanese $n=41$; non-Japanese $n=340$) were included in the population PK analysis. The population PK analysis was based on 3,696 data points from samples collected before administration, 2–4 h after administration, and 5–10 h after administration of regorafenib on day 15 of cycle 1. The analysis showed a similar distribution of calculated AUC over a 24-h dosing interval and AUC from the start of treatment until 24 h after the last dose for regorafenib and its M2 and M5 metabolites in the Japanese and non-Japanese subpopulations (Fig. 3 and Online Resource 1 [Table S1]).

Quality of life

LS mean time-adjusted AUCs of EORTC QLQ-C30 global health status, EQ-5D health utility index, and EQ-5D VAS scores did not differ between regorafenib and placebo groups in either the Japanese or the non-Japanese subpopulation. QoL scores appeared to be similar in the regorafenib and placebo groups at baseline and at the end of treatment in both the Japanese and non-Japanese subpopulations (Table 5).

Discussion

CORRECT is the first randomized, controlled, phase III trial with a substantial number of Japanese patients to assess a new therapeutic agent in mCRC, with previous international phase III studies in this field including only a small number of Japanese patients or none at all. In this analysis, the primary endpoint of OS appeared similar in the Japanese and non-Japanese subpopulations, with HRs (regorafenib over placebo) of 0.81 and 0.77, respectively. Regorafenib was also associated with a greater improvement in PFS and higher DCRs than placebo, with consistent benefits in both the Japanese and the non-Japanese subpopulations.

The adverse-event profile of regorafenib in the Japanese subpopulation differed from that observed in the non-Japanese subpopulation, with a higher incidence of HFSR, hypertension, proteinuria, thrombocytopenia, and lipase elevations, and a lower incidence of diarrhea seen in the former group. The incidence of grade 3 or greater treatment-associated adverse events was higher in the Japanese than in the non-Japanese subpopulation, although serious regorafenib-associated adverse events were reported at similar rates in both subpopulations (9 vs 12 %, respectively) and no unexpected safety signals were observed in either. A higher incidence of HFSR in Japanese versus non-Japanese patients has been noted in previous clinical trials of other kinase inhibitors [11], as has a lower incidence of treatment-related diarrhea in

Table 3 Drug-related adverse events reported in $\geq 10\%$ of patients receiving regorafenib or placebo in the Japanese and non-Japanese subpopulations

Adverse event, <i>n</i> (%)	Japanese subpopulation, <i>n</i> (%)				Non-Japanese subpopulation, <i>n</i> (%)			
	Regorafenib (<i>n</i> =65)		Placebo (<i>n</i> =32)		Regorafenib (<i>n</i> =435)		Placebo (<i>n</i> =221)	
	Any grade	Grade ≥ 3	Any grade	Grade ≥ 3	Any grade	Grade ≥ 3	Any grade	Grade ≥ 3
Any adverse event	64 (99)	52 (80)	19 (59)	7 (22)	401 (92)	223 (51)	135 (61)	28 (13)
Hand-foot skin reaction	52 (80)	18 (28)	1 (3)	0	181 (42)	65 (15)	18 (8)	1 (<1)
Hypertension	39 (60)	7 (11)	1 (3)	0	100 (23)	29 (7)	14 (6)	2 (<1)
Anorexia	28 (43)	6 (9)	8 (25)	3 (9)	124 (29)	10 (2)	31 (14)	4 (2)
Fatigue	28 (43)	5 (8)	8 (25)	3 (9)	209 (48)	43 (10)	63 (29)	10 (5)
Proteinuria	26 (40)	4 (6)	2 (6)	0	9 (2)	3 (<1)	2 (<1)	1 (<1)
Thrombocytopenia	25 (39)	4 (6)	2 (6)	0	38 (9)	10 (2)	3 (1)	1 (<1)
Rash/desquamation	23 (35)	2 (3)	4 (13)	0	107 (25)	27 (6)	6 (3)	0
Voice changes	21 (32)	0	0	0	126 (29)	1 (<1)	14 (6)	0
Fever	17 (26)	2 (3)	1 (3)	0	35 (8)	2 (<1)	6 (3)	0
Lipase elevation	16 (25)	9 (14)	0	0	8 (2)	7 (2)	1 (<1)	1 (<1)
Diarrhea	14 (22)	1 (2)	2 (6)	0	155 (36)	35 (8)	19 (9)	2 (<1)
Hypophosphatemia	13 (20)	9 (14)	0	0	12 (3)	10 (2)	1 (<1)	1 (<1)
Oral mucositis	13 (20)	1 (2)	0	0	123 (28)	14 (3)	9 (4)	0
Aspartate aminotransferase elevation	12 (19)	4 (6)	1 (3)	0	7 (2)	2 (<1)	4 (2)	2 (<1)
Nausea	11 (17)	1 (2)	4 (13)	0	61 (14)	1 (<1)	24 (11)	0
Epistaxis	10 (15)	0	1 (3)	0	26 (6)	0	4 (2)	0
Hyperbilirubinemia	10 (15)	1 (2)	2 (6)	1 (3)	35 (8)	9 (2)	2 (<1)	1 (<1)
Weight loss	10 (15)	0	1 (3)	0	59 (14)	0	5 (2)	0
Amylase elevation	9 (14)	2 (3)	0	0	5 (1)	2 (<1)	0	0
Constipation	9 (14)	0	0	0	33 (8)	0	12 (5)	0
Alanine aminotransferase elevation	8 (12)	3 (5)	1 (3)	0	4 (<1)	2 (<1)	1 (<1)	0
Taste alteration	7 (11)	0	0	0	28 (6)	0	5 (2)	0

Japanese versus non-Japanese patients with mCRC receiving fluoropyrimidine alone or in combination with irinotecan [15, 16]. Investigation of the relationships between the incidence of regorafenib-associated adverse events and BMI or body surface area in the Japanese and non-Japanese subpopulations found no clear trends (body surface area data not shown). Previous anti-epidermal growth factor receptor or capecitabine treatment also showed no relationship with regorafenib-associated HFSR in both the Japanese and the non-Japanese subpopulations (data not shown). Further investigation is needed to clarify the reasons for the higher incidence of HFSR, as well as other differences in adverse-event profile, in the Japanese versus the non-Japanese subpopulation.

One Japanese patient developed fatal liver dysfunction associated with regorafenib treatment, with onset 43 days after starting regorafenib, and death occurring 86 days after initiation of regorafenib. Overall, elevation of ALT, AST and bilirubin levels appeared to occur more frequently in the Japanese subpopulation than in the non-Japanese subpopulation, although rates of grade 3 or greater elevations appeared generally similar between subpopulations. Frequent and careful

monitoring of liver function is advisable, especially during the first two cycles of treatment, because this period is when liver-function abnormalities occurred most frequently in our study.

Corresponding to the higher rate of adverse events observed in the Japanese subpopulation than in the non-Japanese subpopulation, dose modifications due to adverse events were more frequent in the regorafenib-treated Japanese subpopulation than in the non-Japanese subpopulation (84.6 vs 51.3 %, respectively), leading to the lower mean dose intensity in the former than in the latter group (69.3 vs. 80.4 %, respectively).

Rates of treatment discontinuation because of regorafenib-associated adverse events were higher in the Japanese subpopulation than in the non-Japanese subpopulation (13.8 vs 7.4 %, respectively). This difference might be due to interpatient PK variability; however, the regorafenib dose and schedule (160 mg once daily for the first 3 weeks of each 4-week cycle) that was selected as the recommended dose for further study in phase III trials, including CORRECT [7], was based on findings in a phase I trial in non-Japanese patients

Table 4 Relationship between regorafenib-associated adverse events and body mass index (BMI) in Japanese and non-Japanese patients

Adverse event, n (%)	Japanese population						Non-Japanese population					
	Regorafenib (n=65)			Placebo (n=32)			Regorafenib (n=43) ^a			Placebo (n=221)		
	BMI <25 kg/m ² (n=44)	BMI 25 to <30 kg/m ² (n=20)	BMI ≥30 kg/m ² (n=1)	BMI <25 kg/m ² (n=26)	BMI 25 to <30 kg/m ² (n=6)	BMI ≥30 kg/m ² (n=0)	BMI <25 kg/m ² (n=210)	BMI 25 to <30 kg/m ² (n=140)	BMI ≥30 kg/m ² (n=73)	BMI <25 kg/m ² (n=82)	BMI 25 to <30 kg/m ² (n=86)	BMI ≥30 kg/m ² (n=47)
Any adverse event	43 (98)	20 (100)	1 (100)	14 (54)	5 (83)	—	192 (91)	133 (95)	67 (92)	45 (55)	56 (65)	29 (62)
Hand-foot skin reaction	37 (84)	14 (70)	1 (100)	1 (4)	0	—	82 (39)	65 (46)	29 (40)	4 (5)	5 (6)	8 (17)
Hypertension	30 (68)	9 (45)	0	1 (4)	0	—	42 (20)	42 (30)	15 (21)	5 (6)	8 (9)	1 (2)
Anorexia	17 (39)	10 (50)	1 (100)	7 (27)	1 (17)	—	64 (30)	38 (27)	17 (23)	6 (7)	18 (21)	6 (13)
Fatigue	18 (41)	9 (45)	1 (100)	6 (23)	2 (33)	—	103 (49)	65 (46)	36 (49)	20 (24)	32 (37)	10 (21)
Proteinuria	19 (43)	6 (30)	1 (100)	2 (8)	0	—	1 (<1)	5 (4)	2 (3)	0	2 (2)	0
Thrombocytopenia	19 (43)	6 (30)	0	1 (4)	1 (17)	—	23 (11)	12 (9)	3 (4)	1 (1)	2 (2)	0
Rash/desquamation	14 (32)	9 (45)	0	2 (8)	2 (33)	—	59 (28)	36 (26)	12 (16)	1 (1)	4 (5)	1 (2)
Voice changes	16 (36)	5 (25)	0	0	0	—	51 (24)	53 (38)	18 (25)	5 (6)	5 (6)	3 (6)
Fever	9 (20)	8 (40)	0	1 (4)	0	—	22 (10)	8 (6)	5 (7)	3 (4)	3 (3)	0
Lipase elevation	10 (23)	6 (30)	0	0	0	—	3 (1)	4 (3)	1 (1)	0	1 (1)	0
Diarrhea	11 (25)	2 (10)	1 (100)	1 (4)	1 (17)	—	72 (34)	51 (36)	25 (34)	6 (7)	11 (13)	1 (2)
Hypophosphatemia	9 (20)	4 (20)	0	0	0	—	6 (3)	4 (3)	2 (3)	0	1 (1)	0
Oral mucositis	12 (27)	1 (5)	0	0	0	—	61 (29)	45 (32)	16 (22)	4 (5)	3 (3)	1 (2)
Aspartate aminotransferase elevation	7 (16)	5 (25)	0	0	1 (17)	—	6 (3)	1 (<1)	0	0	1 (1)	2 (4)
Nausea	8 (18)	3 (15)	0	3 (12)	1 (17)	—	38 (18)	15 (11)	6 (8)	5 (6)	9 (10)	8 (17)
Epistaxis	6 (14)	4 (20)	0	1 (4)	0	—	8 (4)	11 (8)	6 (8)	1 (1)	1 (1)	2 (4)
Hyperbilirubinemia	7 (16)	3 (15)	0	2 (8)	0	—	18 (9)	9 (6)	8 (11)	1 (1)	0	1 (2)
Weight loss	6 (14)	4 (20)	0	1 (4)	0	—	28 (13)	19 (14)	12 (16)	2 (2)	1 (1)	2 (4)
Amylase elevation	8 (18)	1 (5)	0	0	0	—	3 (1)	2 (1)	0	0	0	0
Constipation	6 (14)	3 (15)	0	0	0	—	9 (4)	16 (11)	6 (8)	3 (4)	6 (7)	3 (6)
Alanine aminotransferase elevation	5 (11)	3 (15)	0	0	1 (17)	—	3 (1)	0	1 (1)	0	0	1 (2)
Taste alteration	4 (9)	2 (10)	1 (100)	0	0	—	14 (7)	7 (5)	7 (10)	0	3 (3)	2 (4)

^aData on BMI were missing for 12 regorafenib-treated patients and six placebo recipients in the non-Japanese population

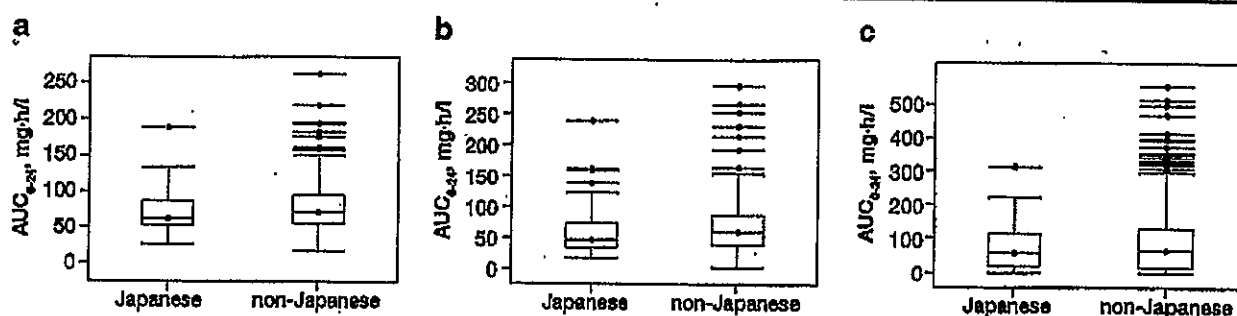


Fig. 3 Distribution of area under the concentration–time curve over a 24-h dosing interval (AUC_{0-24}) of (a) regorafenib, (b) M2 and (c) M5 in Japanese and non-Japanese patients. Boxes represent the median and interquartile range of AUC_{0-24} of regorafenib, M2 and M5; whiskers

represent the range between the lowest and highest values within 1.5 times the first and third quartiles. Dots represent outlying values greater than 1.5 times the third quartile

[17, 18], which was confirmed by a Japanese phase I trial [19]. In addition, population PK analysis in the CORRECT trial showed a similar distribution of regorafenib AUC over a 24-h dosing period in the Japanese and non-Japanese subpopulations. Further investigation is warranted to confirm the reason for the differences in adverse-event profiles and treatment tolerability between Japanese and non-Japanese populations.

Time-adjusted AUCs of the scores on the health-related QoL instruments appeared to be generally similar in both subpopulations, and did not differ significantly between regorafenib and placebo recipients in either subpopulation. Furthermore, differences between regorafenib and placebo were below the minimum difference in scores considered to be

clinically meaningful [20, 21]. These findings indicate that, despite a higher rate of adverse events compared with placebo, regorafenib was not associated with clinically meaningful impairment of QoL in either the Japanese or the non-Japanese subpopulation.

It should be recognized that this subpopulation analysis has some limitations. Firstly, this analysis was not prespecified, although geographic differences were considered in the trial design, and geographical region was a stratification factor during randomization. Secondly, the Japanese subpopulation represents only a small proportion ($n=100$) of the overall patient population ($n=760$ total randomized patients) included in the CORRECT trial; as a result, subpopulation analyses had

Table 5 Time-adjusted area under the curve (AUC) and change from baseline in health-related quality-of-life scores in Japanese and non-Japanese patients

Outcome	Japanese population				Non-Japanese population			
	<i>n</i>	Regorafenib (<i>n</i> =67)	<i>n</i>	Placebo (<i>n</i> =33)	<i>n</i>	Regorafenib (<i>n</i> =438)	<i>n</i>	Placebo (<i>n</i> =222)
EORTC QLQ-C30 global health status								
Baseline, median (range)	65	75.0 (0.0, 100.0)	32	79.2 (16.7, 100.0)	411	66.7 (0.0, 100.0)	208	66.7 (0.0, 100.0)
End of treatment, median (range)	52	50.0 (0.0, 100.0)	30	50.0 (0.0, 91.7)	222	50.0 (0.0, 100.0)	114	50.0 (0.0, 100.0)
Time-adjusted AUC, LSM (95 % CI)		58.0 (53.1, 62.9)		57.7 (51.4, 63.9)		56.3 (52.0, 60.5)		57.7 (53.4, 62.0)
Difference from placebo		0.3 (−5.5, 6.2)		–		−1.4 (−3.5, 0.6)		–
EQ-5D health utility index								
Baseline, median (range)	64	0.8 (−0.1, 1.0)	31	0.9 (0.2, 1.0)	409	0.7 (−0.3, 1.0)	208	0.8 (−0.2, 1.0)
End of treatment, median (range)	51	0.7 (−0.4, 1.0)	29	0.7 (−0.4, 1.0)	221	0.7 (−0.6, 1.0)	114	0.7 (−0.3, 1.0)
Time-adjusted AUC, LSM (95 % CI)		0.7 (0.7, 0.8)		0.7 (0.6, 0.8)		0.6 (0.6, 0.7)		0.6 (0.6, 0.7)
Difference from placebo		0.0 (−0.0, 0.1)		–		−0.0 (−0.0, 0.0)		–
EQ-5D VAS								
Baseline, median (range)	65	75.0 (10.0, 100.0)	32	80.0 (30.0, 95.0)	406	69.0 (3.0, 100.0)	203	70.0 (4.0, 100.0)
End of treatment, median (range)	51	55.0 (4.0, 100.0)	30	60.0 (0.0, 99.0)	221	60.0 (0.0, 99.0)	113	60.0 (5.0, 100.0)
Time-adjusted AUC, LSM (95 % CI)		63.3 (59.2, 67.4)		65.7 (60.5, 70.9)		58.5 (54.5, 62.5)		59.5 (55.4, 63.7)
Difference from placebo		−2.4 (−7.3, 2.5)		–		−1.1 (−3.0, 0.9)		–

Abbreviations: *CI*, confidence interval; *EORTC QLQ-C30*, European Organisation for Research and Treatment of Cancer Quality of Life Questionnaire core-30; *EQ-5D*, EuroQol 5-Dimension; *LSM*, least-squares mean; *VAS*, visual analogue scale

insufficient statistical power for any inferential analyses, which needs to be taken into consideration when interpreting the results. The trial was not designed to test for statistically significant differences between treatment effects (i.e., regorafenib vs placebo) in the Japanese and non-Japanese subpopulations. However, this subpopulation analysis may provide a clearer picture of the efficacy and safety of regorafenib in Japanese patients than comparisons with historical controls derived from other trials conducted in separate populations of Japanese and non-Japanese patients. A phase III trial entitled ‘Asian subjects with mCRC treated with regorafenib or placebo after failure of standard therapy (CONCUR)’ (ClinicalTrials.gov identifier: NCT01584830) is providing more robust efficacy and safety data for regorafenib in Asian patients.

In conclusion, regorafenib appears to be as effective in the Japanese subpopulation as it is in the non-Japanese subpopulation. The adverse-event profile was generally as expected in Japanese patients, although there were some differences in the occurrence of certain adverse events between the Japanese and non-Japanese subpopulations. Adverse events were generally manageable with dose modifications, and durations of treatment were similar in both subpopulations. On the basis of these results, regorafenib has the potential to become a standard of care for Japanese as well as non-Japanese patients with mCRC.

Acknowledgments The authors thank the patients, their families, and all of the investigators who participated in the trial. This work was supported by Bayer HealthCare Pharmaceuticals, Leverkusen, Germany. Bayer provided the study medication and collaborated with the investigators on protocol design, data collection, and interpretation. Editorial assistance in the preparation of this manuscript was provided by Succinct Medical Communications, with financial support from Bayer Yakuhin Ltd. The authors retained editorial control over the manuscript and the decision to publish.

Conflict of interest Takayuki Yoshino has received research funding from Daiichi Sankyo, Taiho, Bayer, Eli Lilly, Pfizer, Chugai and Yakult, and honoraria from Chugai, Takeda and Merck Serono.

Yoshito Komatsu has received research funding from Yakult, Chugai, Taiho, Kureha, Bristol-Myers Squibb, Bayer and Takeda, and honoraria from Taiho, Daiichi-Sankyo, Yakult, Pfizer, Bayer, Takeda, Chugai, Merck Serono and Bristol-Myers Squibb.

Kentaro Yamazaki has conducted research sponsored by Taiho, Eli Lilly, Merck Serono and Bristol-Myers Squibb, and has received honoraria from Takeda, Chugai, Taiho, Yakult, Merck Serono and Bristol-Myers Squibb.

Axel Grothey has received research support for the Mayo clinic from Bayer for functions as Principal Investigator of the CORRECT trial.

Eric Van Cutsem has received research funding paid to his institution from Bayer.

Andrea Wagner, Frank Cihon, and Yoko Hamada are employees of Bayer, and Frank Cihon holds stock in Bayer HealthCare Pharmaceuticals (the makers of Stivarga® [regorafenib]).

Atsushi Ohtsu's spouse used to work for Bayer Japan during her studies.

Yasuhide Yamada, Akihito Tsuji, and Takashi Ura declare that they have no conflicts of interest.

Ethical standards statement The trial protocol was approved by each participating center's institutional review board. The trial followed the principles of the Declaration of Helsinki and good clinical practice and complied with all local laws. Participants provided written informed consent before enrolment.

Open Access This article is distributed under the terms of the Creative Commons Attribution License which permits any use, distribution, and reproduction in any medium, provided the original author(s) and the source are credited.

References

1. Globocan (2013) Colorectal cancer. Estimated cancer incidence, mortality and prevalence worldwide in 2012. http://globocan.iarc.fr/Pages/fact_sheets_cancer.aspx. Accessed 18 Aug. 2014
2. Foundation for Promotion of Cancer Research (2013) Cancer statistics in Japan 2013. http://ganjoho.jp/pro/statistics/en/backnumber/2013_cn.html. Accessed 4 June 2014
3. Schmoll HJ, Van Cutsem E, Stein A et al (2012) ESMO consensus guidelines for management of patients with colon and rectal cancer. A personalized approach to clinical decision making. *Ann Oncol* 23: 2479–2516
4. National Comprehensive Cancer Network (2014) NCCN clinical practice guidelines in oncology (NCCN guidelines): colon cancer. Version 3. 2014. http://www.nccn.org/professionals/physician_gls/pdf/colon.pdf. Accessed 4 July 2014
5. National Comprehensive Cancer Network (2014) NCCN clinical practice guidelines in oncology (NCCN guidelines): rectal cancer. Version 3. 2014. http://www.nccn.org/professionals/physician_gls/pdf/rectal.pdf. Accessed 4 July 2014
6. Wilhelm SM, Dumas J, Adnane L et al (2011) Regorafenib (BAY 73-4506): a new oral multikinase inhibitor of angiogenic, stromal and oncogenic receptor tyrosine kinases with potent preclinical anti-tumor activity. *Int J Cancer* 129:245–255
7. Grothey A, Van Cutsem E, Sobrero A et al (2013) Regorafenib monotherapy for previously treated metastatic colorectal cancer (CORRECT): an international, multicentre, randomised, placebo-controlled, phase 3 trial. *Lancet* 381:303–312
8. US Food and Drug Administration (2012) FDA approves regorafenib (Stivarga) for metastatic colorectal cancer. *Oncology (Williston Park)* 26:896
9. Bayer HealthCare (2013) Bayer's Stivarga® (regorafenib) tablets approved in Japan for the treatment of advanced or recurrent colorectal cancer. <http://press.healthcare.bayer.com/en/press/auth/news-details-page.php/14968/2013-0163>. Accessed 4 June 2014
10. Bayer HealthCare (2013) Bayer's Stivarga® (regorafenib) approved in the EU for the treatment of metastatic colorectal cancer. <http://press.healthcare.bayer.com/en/press/auth/news-details-page.php/15190/2013-0455>. Accessed 4 June 2014
11. Ueda T, Uemura H, Tomita Y et al (2013) Efficacy and safety of axitinib versus sorafenib in metastatic renal cell carcinoma: subgroup analysis of Japanese patients from the global randomized Phase 3 AXIS trial. *Jpn J Clin Oncol* 43:616–628
12. Tsukamoto T, Shinohara N, Tsuchiya N et al (2011) Phase III trial of everolimus in metastatic renal cell carcinoma: subgroup analysis of Japanese patients from RECORD-1. *Jpn J Clin Oncol* 41:17–24

13. Aaronson NK, Ahmedzai S, Bergman B et al (1993) The European Organisation for Research and Treatment of Cancer QLQ-C30: a quality-of-life instrument for use in international clinical trials in oncology. *J Natl Cancer Inst* 85:365–376
14. EuroQol Group (1990) EuroQol—a new facility for the measurement of health-related quality of life. *Health Pol* 16:199–208
15. Shirao K, Hoff PM, Ohtsu A et al (2004) Comparison of the efficacy, toxicity, and pharmacokinetics of a uracil/tegafur (UFT) plus oral leucovorin (LV) regimen between Japanese and American patients with advanced colorectal cancer: joint United States and Japan study of UFT/LV. *J Clin Oncol* 22:3466–3474
16. Yoshino T, Boku N, Onozawa Y et al (2007) Efficacy and safety of an irinotecan plus bolus 5-fluorouracil and L-leucovorin regimen for metastatic colorectal cancer in Japanese patients: experience in a single institution in Japan. *Jpn J Clin Oncol* 37: 686–691
17. Mross K, Frost A, Steinbild S et al (2012) A phase I dose-escalation study of regorafenib (BAY 73–4506), an inhibitor of oncogenic, angiogenic, and stromal kinases, in patients with advanced solid tumors. *Clin Cancer Res* 18:2658–2667
18. Strumberg D, Scheulen ME, Schultheis B et al (2012) Regorafenib (BAY 73–4506) in advanced colorectal cancer: a phase I study. *Br J Cancer* 106:1722–1727
19. Sunakawa Y, Furuse J, Okusaka T et al (2013) Regorafenib in Japanese patients with solid tumors: phase I study of safety, efficacy, and pharmacokinetics. *Invest New Drugs* 32:104–112
20. Osoba D, Rodrigues G, Myles J, Zee B, Pater J (1998) Interpreting the significance of changes in health-related quality-of-life scores. *J Clin Oncol* 16:139–144
21. Pickard AS, Neary MP, Cella D (2007) Estimation of minimally important differences in EQ-5D utility and VAS scores in cancer. *Health Qual Life Outcomes* 5:70

Table S1 Area under the concentration–time curve of regorafenib and its active metabolites in Japanese and non-Japanese patients

	Japanese population (n=41)			Non-Japanese population (n=340)	
	AUC ₀₋₂₄ (mg·h/l)	AUC _{t1-2} (mg·h/l)	AUC ₀₋₂₄ (mg·h/l)	AUC _{t1-2} (mg·h/l)	AUC _{t1-2} (mg·h/l)
Regorafenib					
Mean ± SD	72.7 ± 32.4	3545.3 ± 2331.0	78.9 ± 31.5		4680.3 ± 4111.5
Median (range)	62.8 (27.4–189.0)	2790.0 (772.0–9340.0)	72.7 (19.2–264.0)		3360.0 (528.0–28800.0)
M2					
Mean ± SD	63.0 ± 48.1	2525.5 ± 2139.7	69.1 ± 42.4		3684.7 ± 3868.0
Median (range)	46.3 (16.6–237.0)	1670.0 (467.0–9590.0)	62.4 (3.5–295.0)		2475.0 (163.0–36300.0)
M5					
Mean ± SD	81.3 ± 74.3	2745.9 ± 4492.5	97.6 ± 98.3		9115.8 ± 34837.6
Median (range)	60.5 (4.1–315.0)	1270.0 (177.0–23200.0)	71.3 (1.9–555.0)		1920.0 (37.1–495000.0)

Abbreviations: AUC₀₋₂₄, area under the concentration–time curve over a 24-hour dosing interval
AUC_{t1-2}, area under the concentration–time curve from the start of treatment until 24 hours after the last dose
SD, standard deviation

Figure S1 Flow of Japanese patients through the CORRECT study

